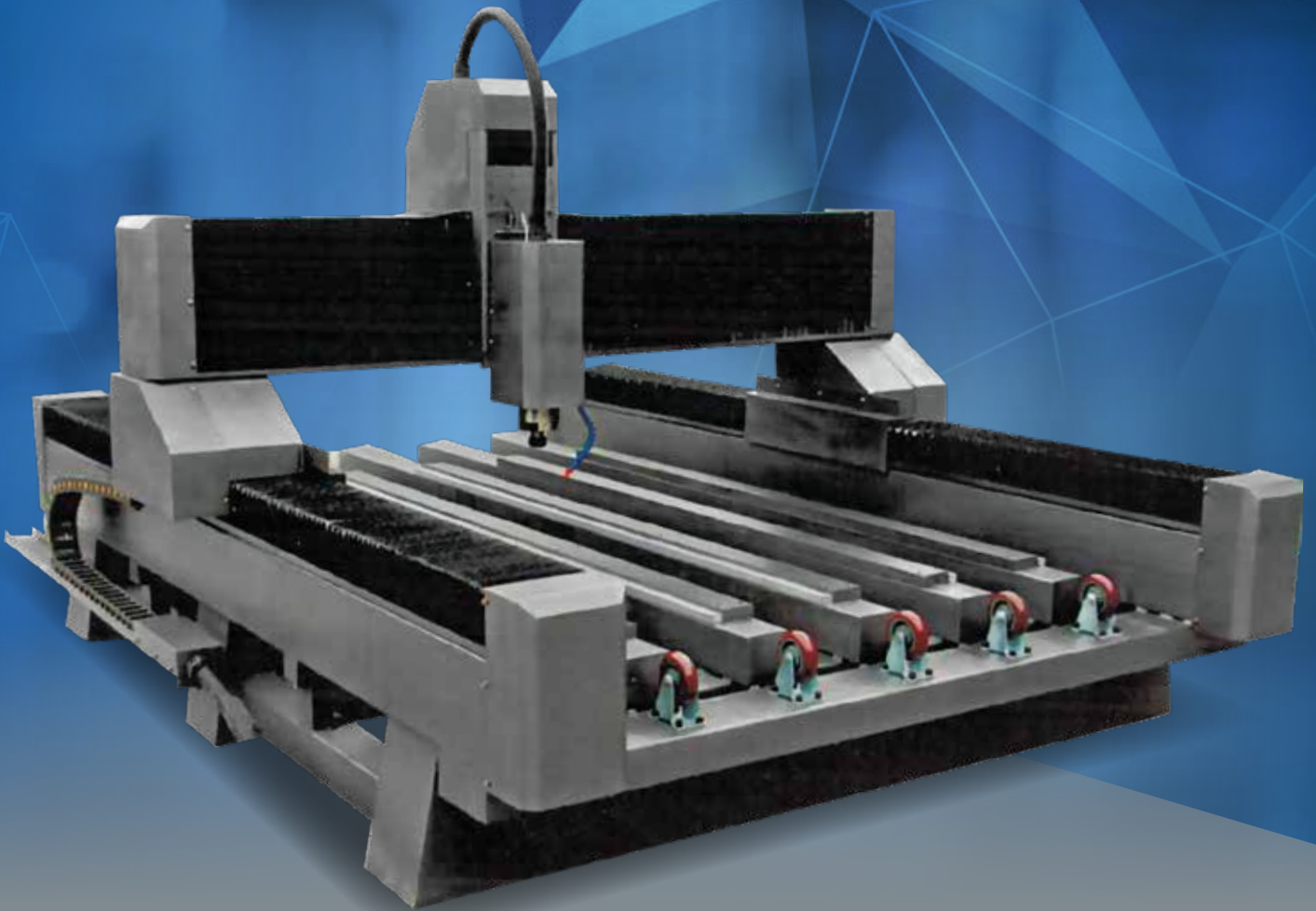


INDUSTRIAL CNC MACHINERY
Quality · Global service · Customized solutions

CNC MILLING MACHINE SW1325 Stone



 **CNCbárcenas**
www.cncbarcenas.com

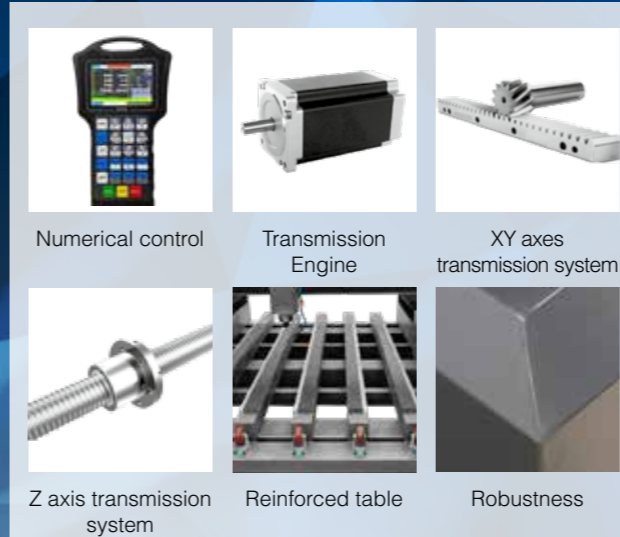


CNC Milling Machine SW1325 Stone

**SPECIALLY DESIGNED FOR WORKS
ON MARBLE AND STONE**

ROBUSTNESS · PRECISION · EASY TO USE

Robust structure and special design. Able to work on materials as hard as marble and stone, in all possible jobs such as cuts, engravings, reliefs ...



STRUCTURE
Structure and bridge made of steel, ready for heavy duty jobs.

TABLE
The mounting table is slotted hollow. With optional water recirculation table.

NUMERICAL CONTROL
Named DSP (Digital Signal Processing) controller, allows to position the machine and start the jobs in a quick and simple way, compared to other systems that require complex learning.

SPINDLE
High frequency motor, brushless and with internal water-cooled ceramic bearings. HSD brand.
· Power 15 KW.
· ISO 40 cutting tool holder.
· 4.500 to 12.000 rpm. with adjustable speed.

AXIS GUIDANCE SYSTEM
HIWIN sliders on all axes (25 mm). Double line on each axis.

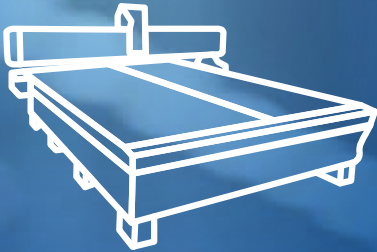
TRANSMISSION
Servomotors (LEADSHINE). Double servo on Y axis.

CONTROLLER CARDS
Servodrives (LEADSHINE).

TRANSMISSION SYSTEM
- XY axes: helical racks with anti-rust treatment. Much more precise than standard racks as they have a larger support area.
- Z axis: calibrated 30 mm diameter ball screw, which provides high precision to the Z axis that holds the electro-spindle.



**INDUSTRIAL STANDARD
CLASSIFICATION CODE
08-A-284-13020079**



technical specifications

CNC Milling Machine SW1325 Stone

Total measures	2100x3150x1750 mm.	Numerical control	DSP A11. Independent control. No computer required.
Work area	1300x2500x200 mm.	Maximum speed	Up to 10 meters/min.
Weight	1800 Kg.	Resolution	+/-0.05 mm.
Workpiece clamping	Hollow slotted table.	Included	Probe for zeroing Z axis.
Guidance system	HIWIN sliders on all axes (25mm). Double line on each axis.	Power supply	400 V.
Transmission system	XY axis: helical racks. Z axis: high quality ball screw.		
Transmission engines	Servomotors (LEADSHINE). Double servo on Y axis.		
Spindle	15 KW. HQD brand. Internal water cooling.		
Tool change	Manual ISO 40.		



www.cncbarceñas.com

Pol. Industrial Entrecaminos. Avda. de Holanda, 42
13300 Valdepeñas (Ciudad Real) - Spain
Tel. +34 926 64 89 85 info@cncbarceñas.com

WE CAN MAKE AN APPOINTMENT SO YOU CAN SEE OUR PRODUCTS.
WE WILL ADVISE YOU ON EVERYTHING YOU NEED AND WE WILL RECOMMEND THE SOLUTION THAT BEST SUITS YOUR NEEDS.

WARRANTY AND CERTIFICATES

Warranty policy on the website.

Together with the guarantee of quality and industrial performance that we provide as manufacturers, and that is backed by a large number of customers, **another fundamental element that differentiates our products is their certification and CE marking (European Conformity)**, which in our case means that the manufacturing and delivery processes have been audited by an external entity, which has endorsed that they are compliant with harmonized European regulations, respecting the relevant health and safety requirements, and therefore their manufacture, marketing and use is authorized in any country of the European Union.

Always choose a product duly approved and marked, since there are quite a few examples of products on the market WITHOUT THE CE MARKING or WITH AN INCORRECT OR FRAUDULENT CE MARKING, which can derive in the withdrawal of the machine by the competent inspection and control authorities, to problems with insurance, civil liability or labor risk prevention regulations.